



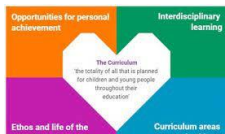
Improvement Priorities 2023/24

Rationale

1. All stakeholders will continue to focus on curriculum development; contributing to the school rationale with a focus on the four contexts of learning.

School & ELC: Review curriculum rationale (interdisciplinary learning and curriculum areas) with all stakeholders.

Further support the needs of all learners through whole staff professional development on 'Attention Autism'.



Literacy

2. Provide high quality learning & teaching experiences in writing through use of learning intentions and success criteria. Talking and listening opportunities to be used as a vehicle to raise attainment in writing.

School: Review learning intentions and success criteria across the school to impact positively in writing.

Increase range of 'texts' to motivate and engage learners in writing. Identified cohort will show improved levels of engagement where applicable.

Review strategies to support vocabulary development through talking & listening.

Extend the use of AAC and digital technology to increase pupil voice and support written work.

ELC: Further develop early writing skills through engaging writing experiences in the playroom and outdoors.



Play/ Outdoor Learning/STEM

3. Further develop Play based learning pedagogy at Early level and introduce play based principles to First & Second level.

School: Further raise awareness of Play pedagogy across the school and with families.

Develop creativity and problem - solving skills using outdoor space and discovery opportunities in identified classes.

Pupil progress and skills progression will be tracked and monitored through play experiences.

School & ELC: Increased opportunities for high quality teaching & assessment in STEM.

Provide further access to outdoor learning experiences for all stages both in the school grounds and local community to promote wellbeing, self-evaluation of risk, as well as team building and resilience.



Equity/Raising Attainment/Health & Wellbeing

4. Equity Priorities:

School: Work in close partnership with YFCL to track, monitor and address barriers to attendance with families (<90%).

Raise attainment in Literacy through 1.1 and small group early intervention with identified groups. Introduce Nuffield Early Literacy Intervention (NELI) & Foundation in Literacy in Primary (FLIPP) to support.

Provide targeted Nurture intervention to improve wellbeing with identified cohort, maintaining our clear focus on attachment informed practice.

Provide targeted support in Numeracy with identified individuals and groups.

School & ELC: CoSD policy to be understood by all stakeholders and inform planning in committees & Parent Council.



Maintenance Agenda

Further enhance profile of sustainability across whole school community – including continued Eco Schools Involvement.

Continue with free provision of snack for all pupils, build on food preparation & skills development. Continue to review and reflect on food choices in consultation with pupils.

Continue to extend opportunities for pupil voice through committee groups to drive forward school improvement and self-evaluation. Learning targets to further develop pupil voice using strategies to best support the learner – pictorial, written, photos, video, AAC.

Further engage parents in self-evaluation of school improvement plan priorities.

